

Flixene

The Dialysis Graft

MAQUET
GETINGE GROUP

Ability to safely cannulate within 72 hours¹⁷

- Reduced catheter dependence

Unique wall design

- Average outer porosity of 60µm to promote tissue ingrowth¹³
- Strong and durable midsection designed for repeated cannulation



Graduated wall technology

- Reduced wall thickness that extends approximately 8 cm on each end for improved suturability and handling

Unique Graft Deployment System (GDS)¹⁴

- Improved primary patency at 180 days
- Designed to make tunneling easier than conventional practices
- Minimize soft tissue trauma
- Reduce graft sweating

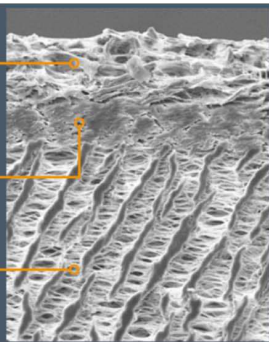


3-layer ePTFE graft

Large pore (nominal 60µm) surface layer, more receptive to tissue ingrowth¹

Middle layer, reinforcing wrap for increased support

Small pore base layer, inner graft surface porosity of nominal 20µm¹



Heparin-coated vs non-heparin
Ann Vasc Surg. 2016 Jan;30:28-33.